



INSTANT 802.3af

Indoor and Outdoor Adapters

Models: INS-8023AF-O, INS-8023AF-I

Transforms PoE Devices into 48V, 802.3af-Compliant Products

Works with 802.3af Switches for Remote Control Power Applications

Enables Longer Cable Run Lengths



Overview

The Instant 802.3af Adapter transforms almost any Ubiquiti PoE (Power over Ethernet) device into a fully compliant 48V, 802.3af-compatible product.

PoE Switch Compatibility

The Instant 802.3af Adapter works seamlessly with a variety of 802.3af switches for remote power control applications. As you manage and monitor your network, you can conveniently power or power cycle your remote devices using your 802.3af switch.

For ease of power management, you can centralize the 802.3af switch and power source, and you can include a UPS (Uninterruptible Power Supply) as a backup. This way your network continues to run even during a temporary power outage.

Ubiquiti Compatibility

Available in both indoor and outdoor versions, the Instant 802.3af Adapter is compatible with most Ubiquiti PoE devices* using 100 Mbps ports, including:

- airMAX™
- airVision™
- UniFi™
- mFi™

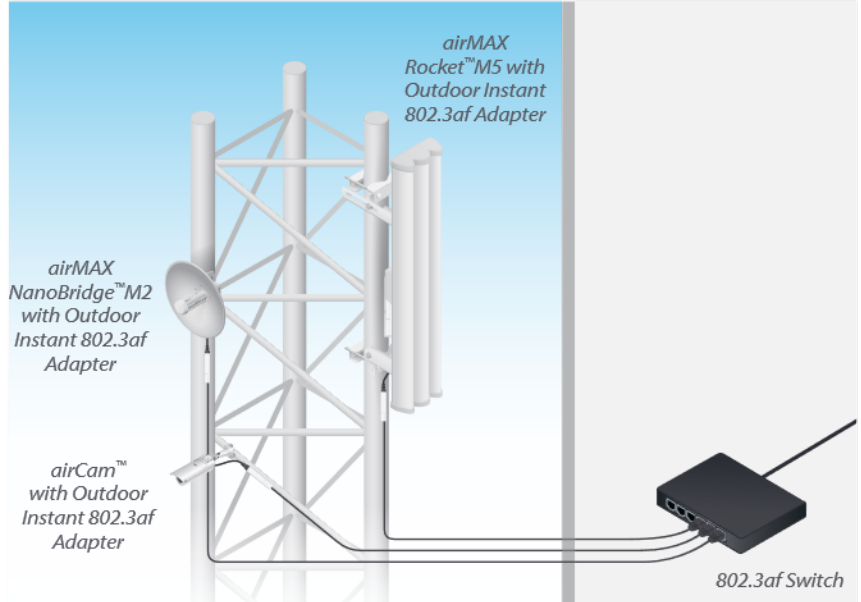
Longer Cable Runs

High voltage carries power more efficiently (using less current) than low voltage. The Instant 802.3af Adapter enables longer 48V cable runs due to a more efficient power delivery – so your products can get the power they require even when they are located far from the 802.3af switch.

ESD/Surge Protection

The Instant 802.3af Adapter provides an additional ±15kV of Ethernet isolation for built-in protection that lessens the risk of ESD or surge damage to your devices.

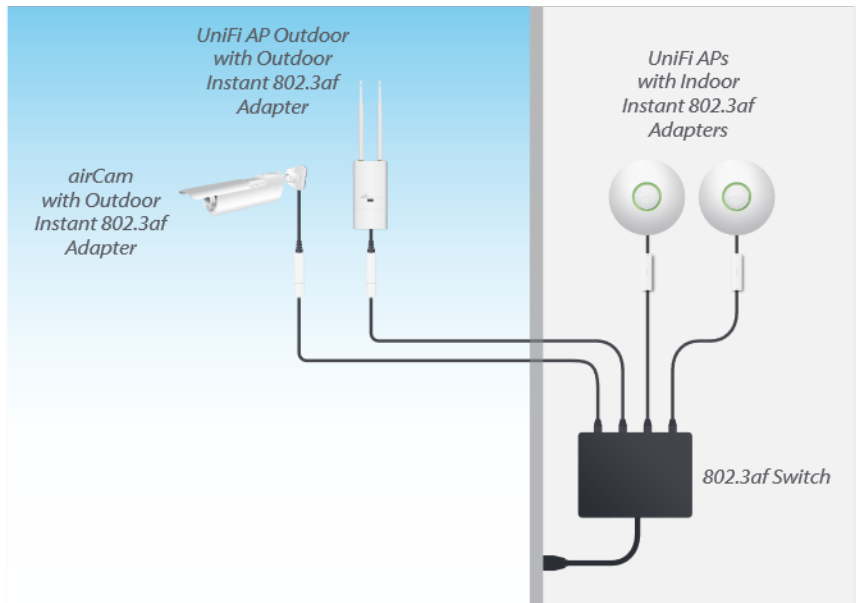
* Check product specifications to verify voltage compatibility.



Outdoor products powered by 802.3af switch

airMAX Product	Compatibility	airVision Product	Compatibility
RocketM	✓	airCam	✓
BulletM	✓	airCam Dome	✓
Bullet TitaniumM	✓	airCam Mini	✓
NanoBridgeM	✓	UniFi Product	Compatibility
NanoStationM	✓	UniFi AP	✓
NanoStationlocoM	✓	UniFi AP LR	✓
PowerBridgeM	✓	UniFi AP Outdoor	✓
NanoBridgeM	✓	mFi Product	Compatibility
airGridM	✓	mPort	✓
PicoStationM	✓	mPort Serial	✓

Ubiquiti products compatible with Instant 802.3af Adapters



Indoor and outdoor products powered by 802.3af switch

Specifications

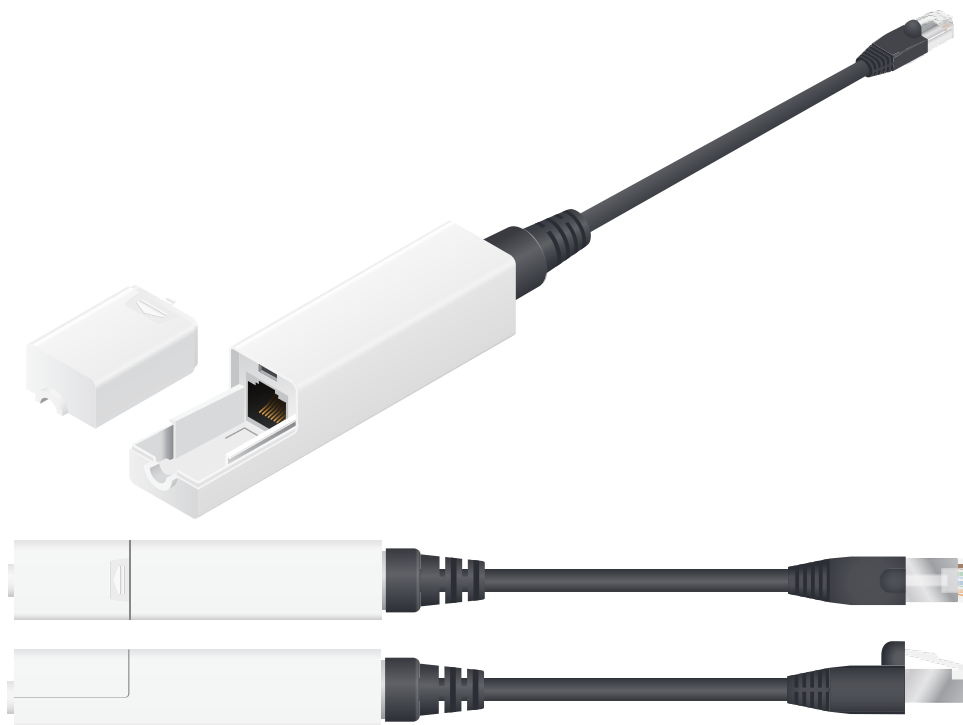
Electrical Information	
Input Power	48V, 802.3af (with Sensing Capability)
Output Power	18V, 0.7A
Output PoE Method	Positive 4, 5; Return 7, 8
Ethernet ESD/Surge Protection	±15kV

Physical Information		
Model	INS-8023AF-I	INS-8023AF-O
Dimensions (mm)	93.5 x 27 x 21.5	315 x 25.8 x 24.8
Weight	200 g	300 g
Operating Temperature	0 to 70° C	-30 to 70° C
Output Ethernet Cable	N/A	Shielded CAT5, Length: 10 cm

Instant 802.3af Adapter, Indoor Version, model INS-8023AF-I



Instant 802.3af Adapter, Outdoor Version, model INS-8023AF-O



TOUGH Cable™

OUTDOOR CARRIER CLASS SHIELDED

Protect your networks from the most brutal environments with Ubiquiti Networks' industrial-grade, shielded Ethernet cable, TOUGH Cable.

Increase Performance

Dramatically improve your Ethernet link states, speeds, and overall performance with Ubiquiti TOUGH Cables.

Extreme Weatherproof

Designed for outdoor use, TOUGH Cables have been built to perform even in the harshest weather and environments.

ESD Damage Protection

Protect your networks from devastating electrostatic discharge (ESD) attacks.

Extended Cable Support

TOUGH Cables have been developed to increase power handling performance for extended cable run lengths.

Bulletproof your networks

TOUGH Cable is currently available in two versions: PRO Shielding Protection and CARRIER Shielding Protection.

TOUGH Cable PRO is a Category 5e, outdoor, carrier-class shielded cable with an integrated ESD drain wire.

TOUGH Cable CARRIER is a Category 5e, outdoor, carrier-class shielded cable that features an integrated ESD drain wire, anti-crosstalk divider, and secondary shielding. It is rated to provide optimal performance on Gigabit Ethernet networks.

Additional Information:

- 24 AWG copper conductor pairs
- 26 AWG integrated ESD drain wire to prevent ESD attacks and damage
- PE outdoor-rated, weatherproof jacket
- Multi-layered shielding
- Available in lengths of 1000 ft (304.8 m)

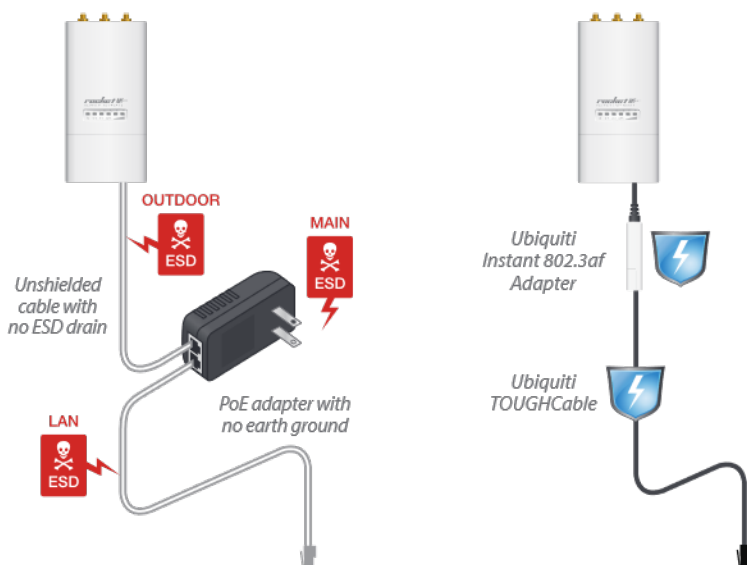


TOUGH Cable Connectors

Specifically designed for use with Ubiquiti TOUGH Cables, TOUGH Cable Connectors protect against ESD attacks and Ethernet hardware damage, while allowing rapid field deployment without soldering. The standard TOUGH Cable Connectors are available in 100-pc. bags, while the TC-GND versions include ground wires and are available in 20-pc. bags.

ESD attacks are the leading cause for device failures. The diagram below illustrates the areas vulnerable to ESD attacks in a network.

By using a grounded Ubiquiti Power over Ethernet (PoE) Adapter along with Ubiquiti TOUGH Cable and TOUGH Cable Connectors, you can effectively protect against ESD attacks.



www.ubnt.com

All specifications in this document are subject to change without notice.